

Quantification of Ferritin in human serum/plasma using ELISA

Ferritin is a ubiquitous intracellular protein that stores iron and releases it in a controlled fashion. Ferritin is secreted into serum where it functions as an iron carrier. Plasma/serum ferritin is an indirect marker of the total amount of iron stored in the body, hence used as a diagnostic test for iron deficiency/anemia.

The reference interval for ferritin are 20 – 300 mg/ml. Low values indicate depleted iron storage while high values do not indicate may occur even when iron deficient. Extreme values with hemochromatosis and leukaemia.

Vitas AM-039 is a direct sandwich ELISA quantification method for ferritin in serum/plasma.

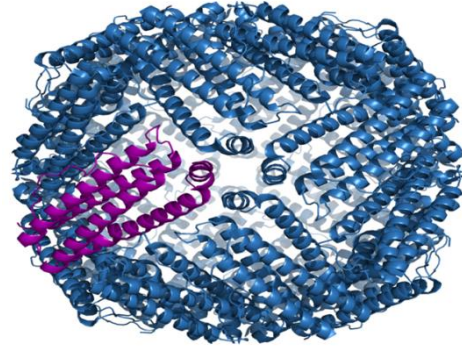
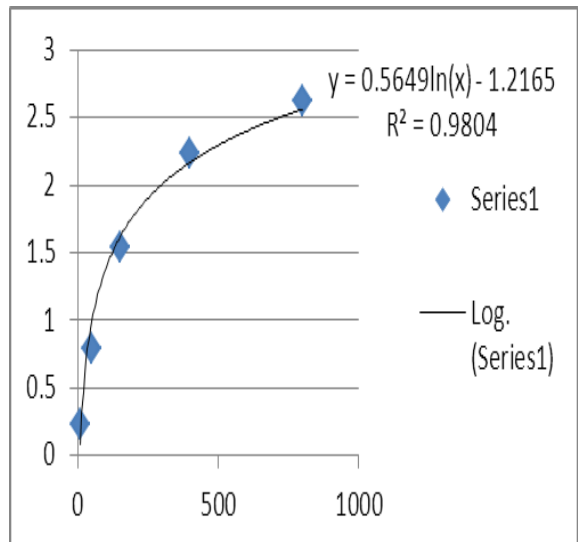


Illustration of the ferritin protein

Calibration curve for the quantification of ferritin in human serum



Method details:

- | | |
|------------------|--------------------------------|
| • Technique: | Sandwich ELISA |
| • Sample Matrix: | Plasma ,serum |
| • Species: | All |
| • Anticoagulant: | All |
| • Sample volume: | 50 µL |
| • Shipping: | Dry Ice |
| • Method Range: | 10-800 mg/ml |
| • LOD: | 0.5 ng/ml |
| • Precision: | 4.5 % |
| • Accuracy: | Kit QC, Comp with external lab |

Vitas is a Norwegian GMP certified chemical analysis contract lab, with 20 years experience in providing a high quality, custom chromatographic analytical service based on cutting-edge knowledge and technology.